



BTEC

rsos





[BTEC Firsts](#)

[BTEC Tech](#)

[Awards](#)

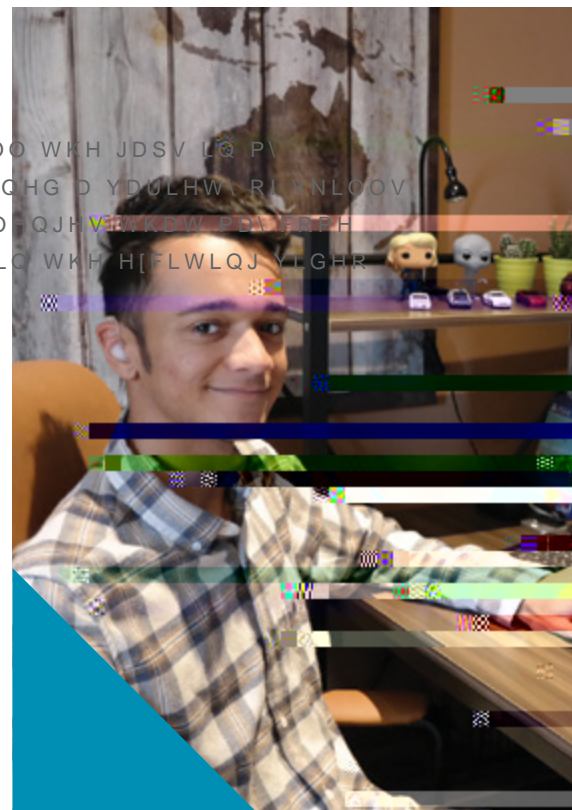
[BTEC Nationals](#) [BTEC Level 2 Technicals](#) [BTEC Apprenticeships](#)


“

0\ %7(& FRXUVH KHOSHG PH 400 WKH JDSV L@ P\  
FRQ4GHQFH DQG – KDYH OHDUQHG D YDULHW RI YNLOOV  
SUHSDULQJ PH IRU WKH FKDOO QJH V&W&W P&V FRPH  
DORQJ LQ P\ IXWXUH FDUHHU L@ WKH H[FLWLQJ YLGR  
JDPH LQG XVWU\

”

[Jerome Walton](#)

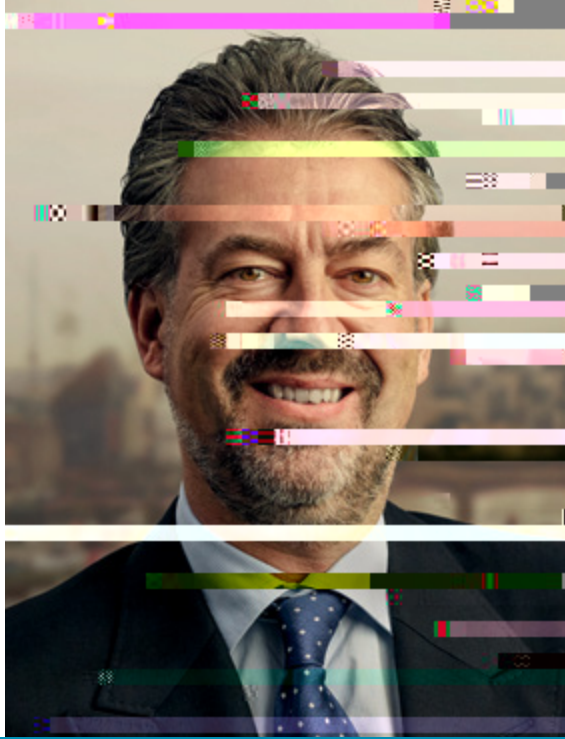


 Turn to page 16 to explore your BTEC options at school and college



BTEC Nationals







Connor Thomas

“

BTEC helped me to develop my practical  
VNLOOV EXLOG FRQ4GHQFH DQG S SDUHG PH IRU  
interviews and university.

”



Hayley Simpson

“

My BTEC got me into university and it's given  
me many options for my future.

”



Kirsty Fishwick

My favourite part of the course was visiting  
social enterprises. This was an eye-opening  
experience and I met some fantastic  
people who devoted their working life  
to helping others.

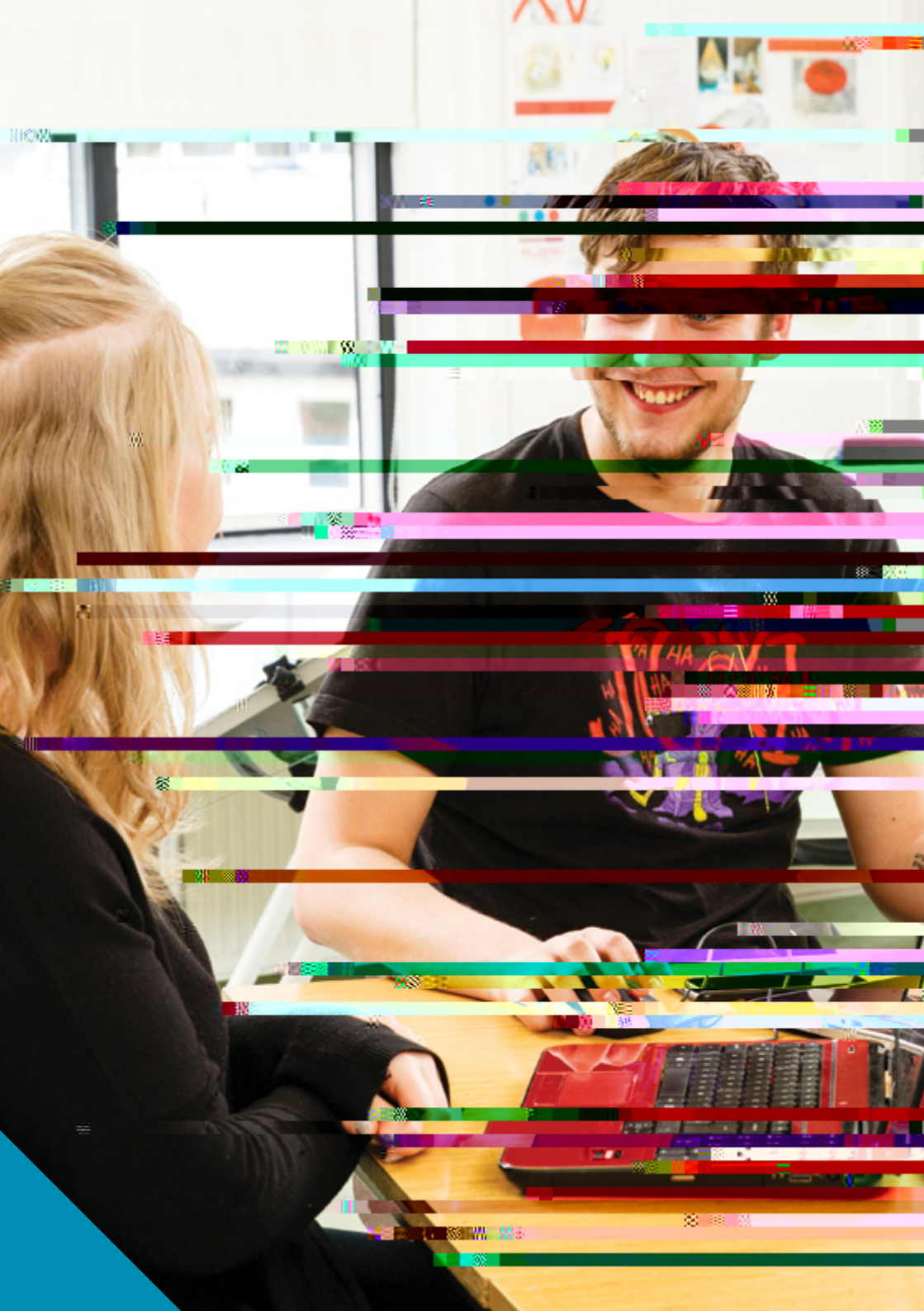
I hadn't completed any business-related  
course before my BTEC, so to be accepted  
into Durham University after receiving my  
TXDOL4FDWLRQ VKRZV MXVW KRZ ZH  
UHFRJQLVHG %7(& TXDOL4FDWLRQV I

“

My BTEC course was very exciting. I got  
to set up a micro-business which gave me  
the skills I needed to become a real  
business owner.

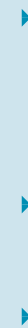
”





## How you'll be assessed

BTEC assessment:



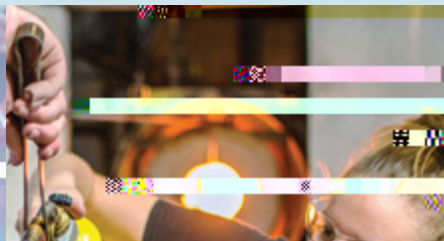
6SHFL4FDWLRQ

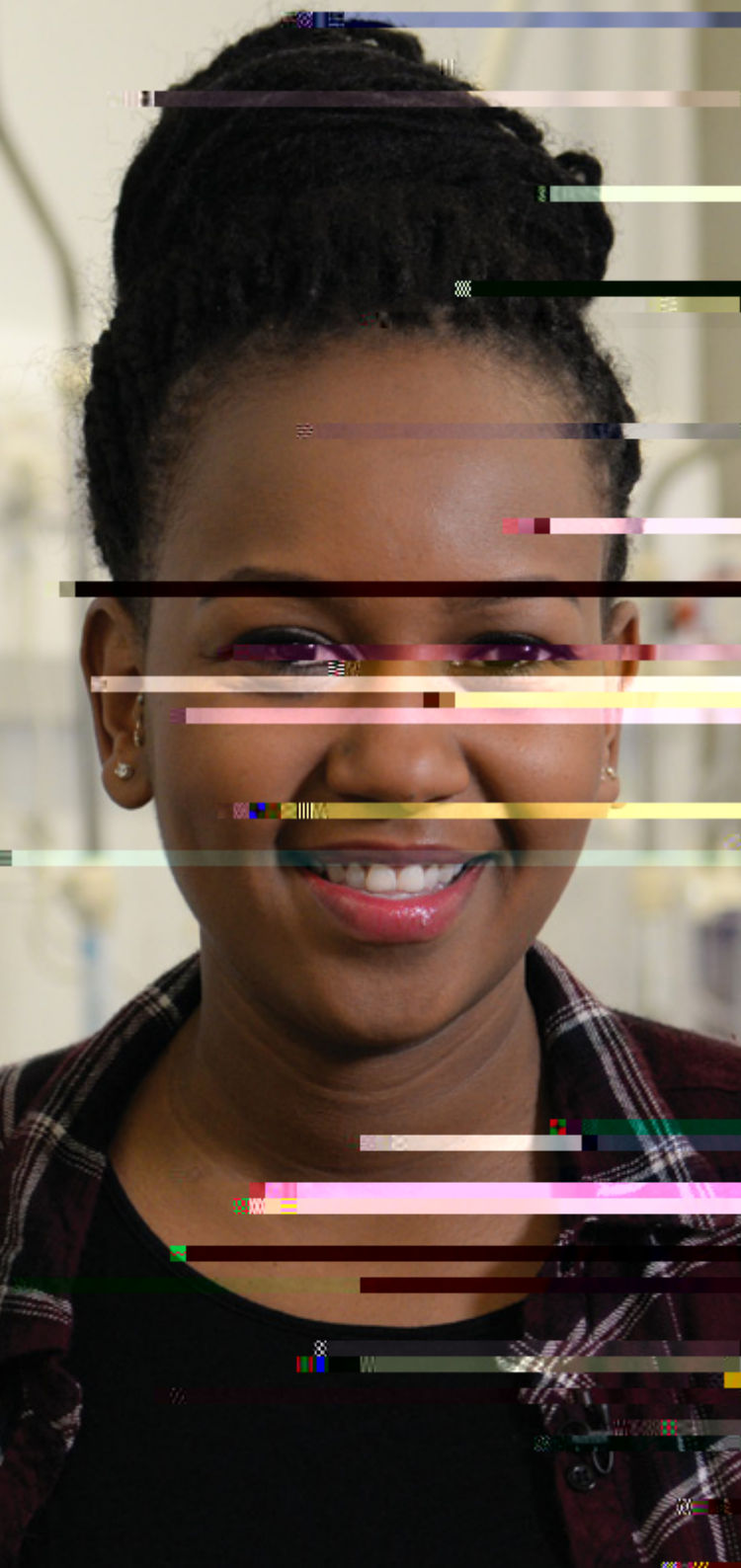






BTEC can help you progress towards a career in a wide range of sectors, including:





## What you can study

From Sep 2017:

---

---

---

---

---

---

Aid progression to:  
A Levels, BTEC Nationals, Apprenticeships or Employment

Aspire. Do. Achieve. Succeed.

## Overview

- ▶
- ▶
- ▶

## What you can study from Sept 2017:

Applied Science

Engineering

ICT and Computing

Business

Hospitality and Travel  
& Tourism

Land-based Studies

Sport

Childcare

&KLOGUHQ V 3OD\ /HDUQLQJ



## Step into your future

### Overview

### What you'll learn



4XDOL4FDWLRQ VLJHV

BTEC  
National

No. of A levels  
equivalent to:

GLH (Guided  
Learning Hours)

&HUWL4FDWH

([WHQG HG 'LSORPD



Aid progression to:

Employment, Higher Education, Apprenticeships or BTEC Higher Nationals



